

**Product Description:** Hemp CBD Bulk Tincture 668g/10L MCT, CO2I, NAT

**Invoice Number:** 2020-1110A

**Lot Number:** TB-00621-B1

**Manufacture Date:** Jan 06, 2021

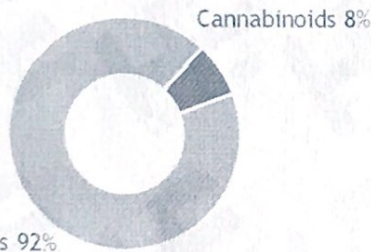
**Product Code:** TB-668-CO2I-MCT-NAT-10

**Date of Analysis:** Jan 07, 2021

**Best By Date:** Jul 05, 2022

**Cannabinoid Potency - Expected CBD: 66.80 mg/mL ± 10%**

**% Total Cannabinoids**



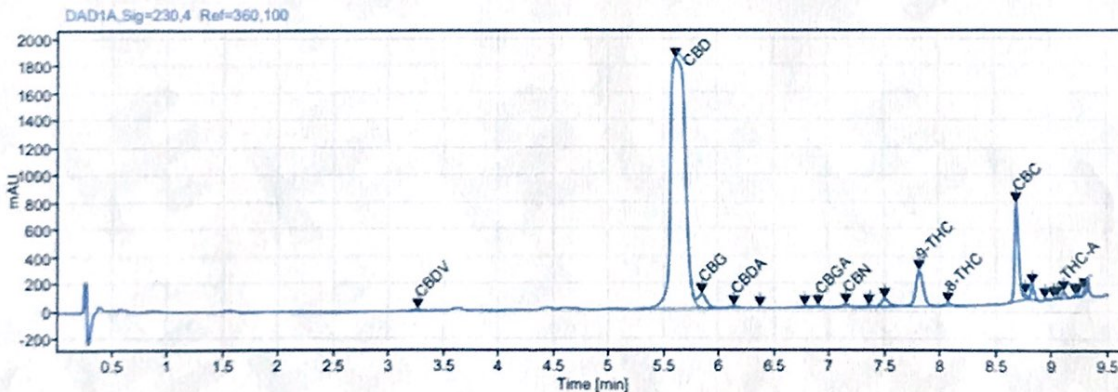
\*Total d9-THC and CBD are calculated taking into account the loss of a carboxyl group during decarboxylation.  
The formulas are as follows : d9-THC = d9THC + (THCa \*(0.877))    CBD = CBD + (CBDa \*(0.877))  
\*\*Any compounds with results listed as "ND" were not detected during analysis.  
\*\*\*LOQ is the limit of quantitation for any given analyte.

	mg/mL	%	LOQ (mg/mL)
<b>Total CBD:</b>	<b>70.52 mg/mL</b>	<b>7.05 %</b>	0.05 mg/mL
CBD:	70.47 mg/mL	7.05 %	0.05 mg/mL
CBDa:	0.05 mg/mL	0.01 %	0.05 mg/mL
<b>d9-THC:</b>	<b>2.31 mg/mL</b>	<b>0.23 %</b>	0.05 mg/mL
CBC:	1.66 mg/mL	0.17 %	0.05 mg/mL
CBG:	0.96 mg/mL	0.10 %	0.05 mg/mL
CBGa:	<0.05 mg/mL	<0.01 %	0.05 mg/mL
CBN:	<0.05 mg/mL	<0.01 %	0.05 mg/mL
CBDV:	0.09 mg/mL	0.01 %	0.05 mg/mL
d8-THC:	0.17 mg/mL	0.02 %	0.05 mg/mL
THCa:	0.06 mg/mL	0.01 %	0.05 mg/mL

**Density:** 1.000 (kg/m<sup>3</sup>)

**Specific Gravity:** 1.003

**Chromatogram**



Prepared By: S. Scarabosio  
Analytical Lab Manager  
Jan 08, 2021

Reviewed By: B. Estes  
QA/QC  
Jan 08, 2021




Analyzed via HPLC Under These Conditions: Humidity: 26% Temperature: 70.7 F

ISO 9001:2015 Certificate Number: US4293

*Certificate of Analysis test results are based only on the analysis of the product listed in the "Product Description" of this form. Hammer Enterprises, LLC, makes no claims as to the efficacy, safety, or other risks associated with any detected or non-detected compounds reported herein. All analyses conducted at Hammer Enterprises, LLC is performed on well-maintained, quality instruments utilizing Good Laboratory Practices and validated methodology. This Certificate may not be reproduced except in full, without the written approval of Hammer Enterprises, LLC. DISCLAIMER: When reviewing certificate ensure watermark is complete and intact. Watermark will present as repeating HE logos diagonally across the entire page. The authenticity of this document is not guaranteed if there is evident modification, blocking, or alterations of the watermark.*





Product Specification Sheet:  
MCT Tincture, Bulk  
Full-Spectrum

Document #:  
PSS-TB-CO2I-MCT-NAT  
Version: 1.3  
Issue Date: 11/01/2019  
Supersedes: 09/16/2019

30616 Bryant Drive  
Evergreen, CO 80439

Product Code:  
TB-668-CO2I-MCT-NAT-10

Completed By: SES  
Invoice #: 2020-1110A

**SECTION 1: PRODUCT DETAILS**

PRODUCT NAME	Hemp-derived Cannabidiol (CBD) Tincture – MCT Oil Base, Full-Spectrum		
PRODUCT DESCRIPTION	CBD Tincture in Medium Chain Triglyceride, Full-Spectrum		
INTENDED USE	For oral consumption.		
COUNTRY OF ORIGIN	USA	LOT #	TB-00621-B1
MANUFACTURE DATE	Jan 06, 2021	CBD POTENCY	70.47 mg/mL
BEST BY DATE	Jul 05, 2022	NET WEIGHT	10,177.5g (359.0oz) per container

**SECTION 2: INGREDIENT AND NUTRITION INFORMATION**

INGREDIENTS LIST	NUTRITION FACTS PANEL PER 30mL																												
<p>Ingredients: Medium Chain Triglyceride (MCT) Oil, Hemp Cannabidiol (CBD) Oil, Hemp Cannabidiol (CBD) Isolate. <i>(Contains &lt;0.3% THC).</i></p> <p><i>Store in original container in a cool, dark place. Keep out of direct light and humidity.</i></p> <p><b>Directions for Use:</b> <i>Take 1-2 servings as needed.</i></p> <p><b>Precautionary Allergen Statement:</b> <i>Manufactured in a facility that handles almonds, anchovy, coconut, salmon, soy, and walnuts.</i></p> <p><i>The FDA has not evaluated this product for safety or efficacy. This product is intended for oral use. This product is not intended to diagnose, treat, cure or prevent any disease.</i></p>	<div style="border: 1px solid black; padding: 5px;"> <h3 style="text-align: center;">Nutrition Facts</h3> <p>30 servings per container <b>Serving size 0.2 tsp (1ml)</b></p> <hr/> <p>Amount per serving <b>Calories 10</b></p> <hr/> <p style="text-align: right;">% Daily Value*</p> <table style="width: 100%; border-collapse: collapse;"> <tr> <td><b>Total Fat</b> 1g</td> <td style="text-align: right;">1%</td> </tr> <tr> <td>Saturated Fat 1g</td> <td style="text-align: right;">5%</td> </tr> <tr> <td>Trans Fat 0g</td> <td></td> </tr> <tr> <td><b>Cholesterol</b> 0mg</td> <td style="text-align: right;">0%</td> </tr> <tr> <td><b>Sodium</b> 0mg</td> <td style="text-align: right;">0%</td> </tr> <tr> <td><b>Total Carbohydrate</b> 0g</td> <td style="text-align: right;">0%</td> </tr> <tr> <td>Dietary Fiber 0g</td> <td style="text-align: right;">0%</td> </tr> <tr> <td>Total Sugars 0g</td> <td></td> </tr> <tr> <td>Includes 0g Added Sugars</td> <td style="text-align: right;">0%</td> </tr> <tr> <td><b>Protein</b> 0g</td> <td></td> </tr> <tr> <td>Vitamin D 0mcg</td> <td style="text-align: right;">0%</td> </tr> <tr> <td>Calcium 0mg</td> <td style="text-align: right;">0%</td> </tr> <tr> <td>Iron 0mg</td> <td style="text-align: right;">0%</td> </tr> <tr> <td>Potassium 0mg</td> <td style="text-align: right;">0%</td> </tr> </table> <p><small>*The % Daily Value tells you how much a nutrient in a serving of food contributes to a daily diet. 2,000 calories a day is used for general nutrition advice.</small></p> </div>	<b>Total Fat</b> 1g	1%	Saturated Fat 1g	5%	Trans Fat 0g		<b>Cholesterol</b> 0mg	0%	<b>Sodium</b> 0mg	0%	<b>Total Carbohydrate</b> 0g	0%	Dietary Fiber 0g	0%	Total Sugars 0g		Includes 0g Added Sugars	0%	<b>Protein</b> 0g		Vitamin D 0mcg	0%	Calcium 0mg	0%	Iron 0mg	0%	Potassium 0mg	0%
<b>Total Fat</b> 1g	1%																												
Saturated Fat 1g	5%																												
Trans Fat 0g																													
<b>Cholesterol</b> 0mg	0%																												
<b>Sodium</b> 0mg	0%																												
<b>Total Carbohydrate</b> 0g	0%																												
Dietary Fiber 0g	0%																												
Total Sugars 0g																													
Includes 0g Added Sugars	0%																												
<b>Protein</b> 0g																													
Vitamin D 0mcg	0%																												
Calcium 0mg	0%																												
Iron 0mg	0%																												
Potassium 0mg	0%																												

*This document is provided for documentation purposes only. The information contained herein is believed to be accurate and represents the best information currently available to Hammer Enterprises Integrated Solutions, LLC. However, Hammer Enterprises Integrated Solutions, LLC makes no warranty, expressed or implied, regarding such information, and assumes no liability resulting from its use. Users should make their own investigations to determine the information suitability for their particular purpose. If there are any questions concerning the information contained in this sheet or its applicability to a particular use, the user is instructed to contact Hammer Enterprises Integrated Solutions, LLC. Hammer Enterprises Integrated Solutions, LLC assumes no responsibility for injury from the use of the product described in this sheet in a way different from that provided in the label directions.*